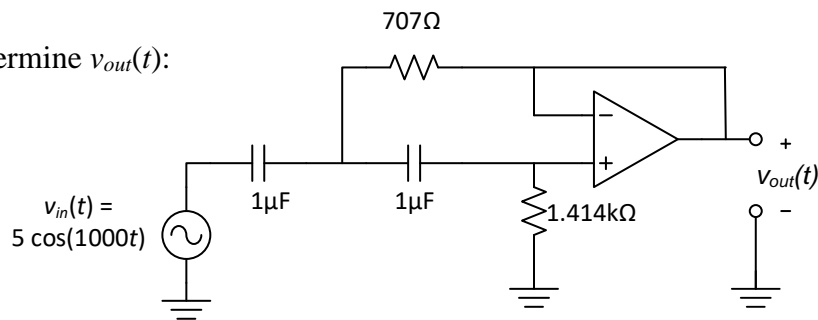


**P1** Determine  $v_{out}(t)$ :



Hint: Answer's phase should be close to  $90^\circ$ .

**P2** What is  $V_{out}(t)$  if we change  $v_{in}(t)$  to 5V (i.e. a **DC** signal of  $\omega = 0$  rad/s)

**P3** Plot the magnitude of  $v_{out}(t)$  as the input frequency changes from 10 to 10kHz using LTspice. This is an example of a *filter*. Does it pass low or high frequencies?